








## DATASHEET

# 4-Post Frame

A sturdy mounting frame solution to house IT equipment and provide maximum cabling access and capacity.

Cross-Guard offers a range of open frames that are ideally suited to telecommunications rooms for copper/fibre patching. The open access design allows for ease of installation and provides a secure connectivity solution for CAT 6A & CAT 7 Cabling.

### Primary Features

-  Bolt together construction
-  2 x Vertical 19" supports
-  2 x Pre-drilled base mounting angles (bolts not supplied)
-  2 x top support angles
-  Supplied in a simple kit for easy installation



### Options

<b>Height</b>	42U, 45U, 47U, 52U
<b>Cable Management</b>	Hinged covered cable managers supplied separately. See following page for details.
<b>Finish</b>	Black (White, Light Grey or other finishes available on request)



## CABLE MANAGEMENT AND BAYING

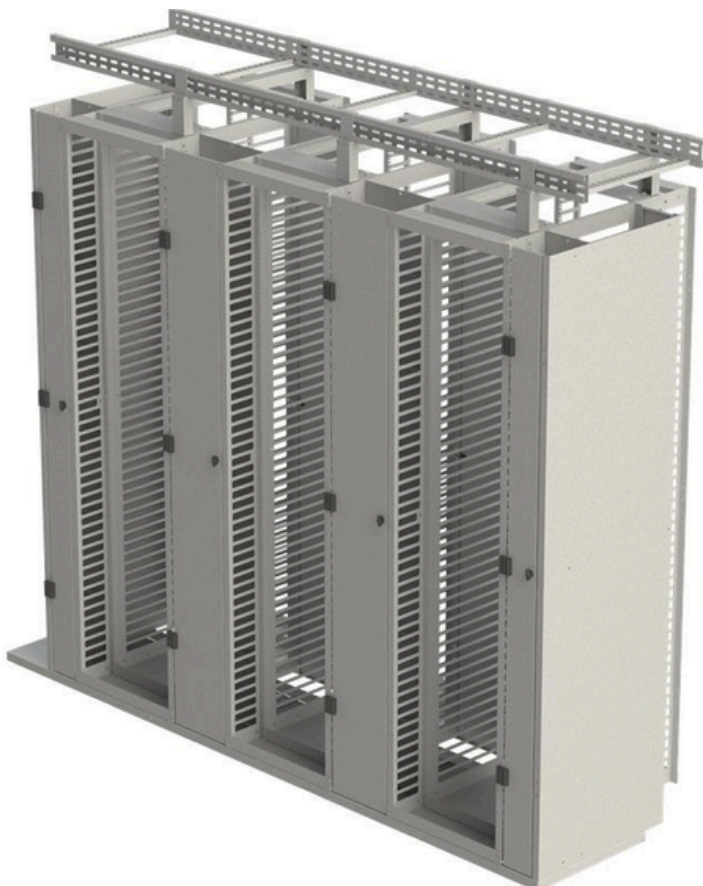
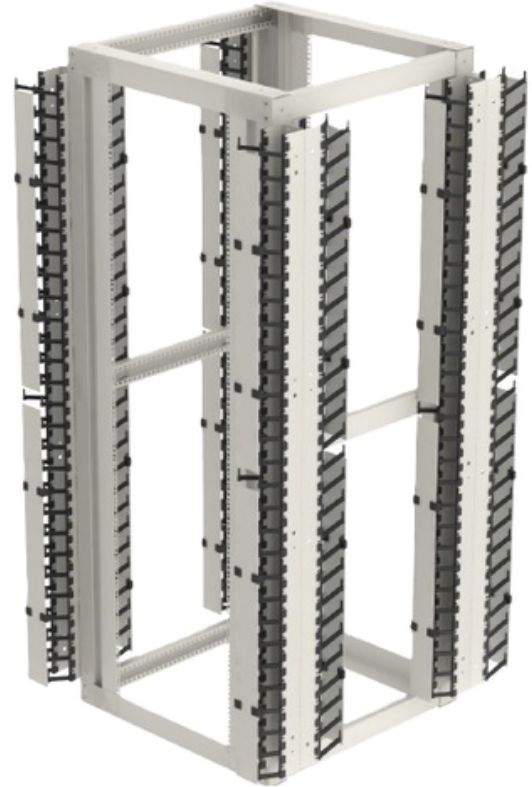
# 4-Post Frame

### Vertical Cable Managers

Our Vertical Cable Managers are available in a range of unit heights and in two standard widths.

The cable managers are designed to bolt to the sides of the 4 post rack frames and can be configured either in single or double configurations.

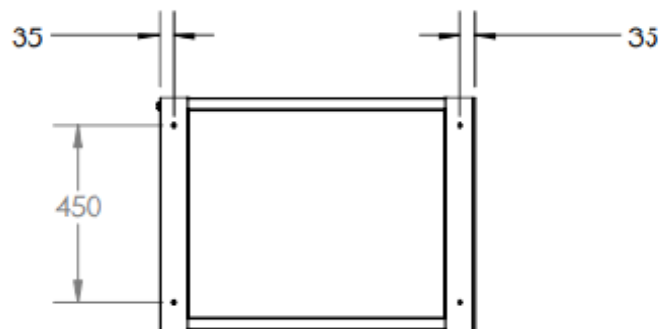
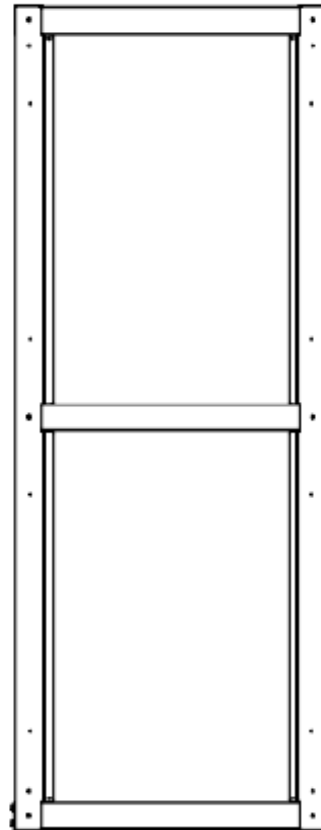
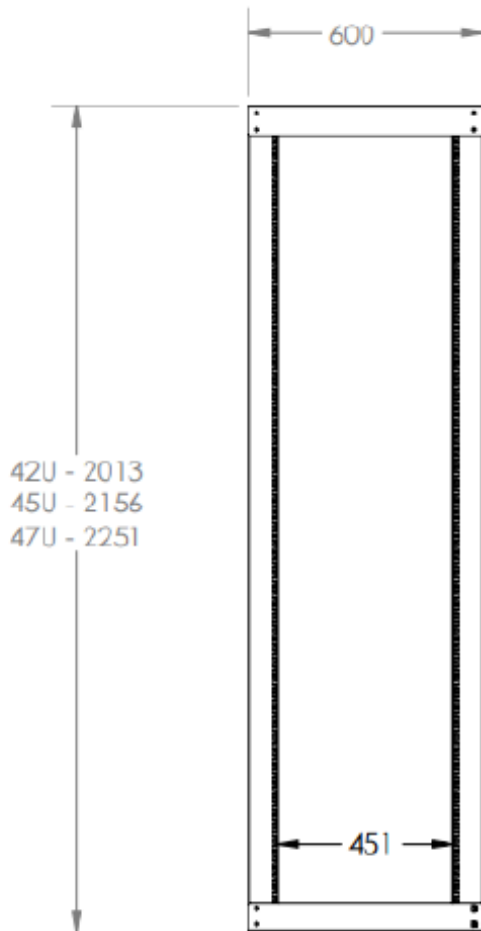
They are supplied with dual hinged split covers for ease of operation and improved cable management.





# 4-Post Frame

## DRAWINGS



HEIGHT	HEIGHT - A (mm)
<b>42U</b>	2013 mm
<b>45U</b>	2156 mm
<b>47U</b>	2251 mm
<b>52U</b>	2444 mm